



DCG

DIGIORGIOLAB

ESPRESSO MACHINE



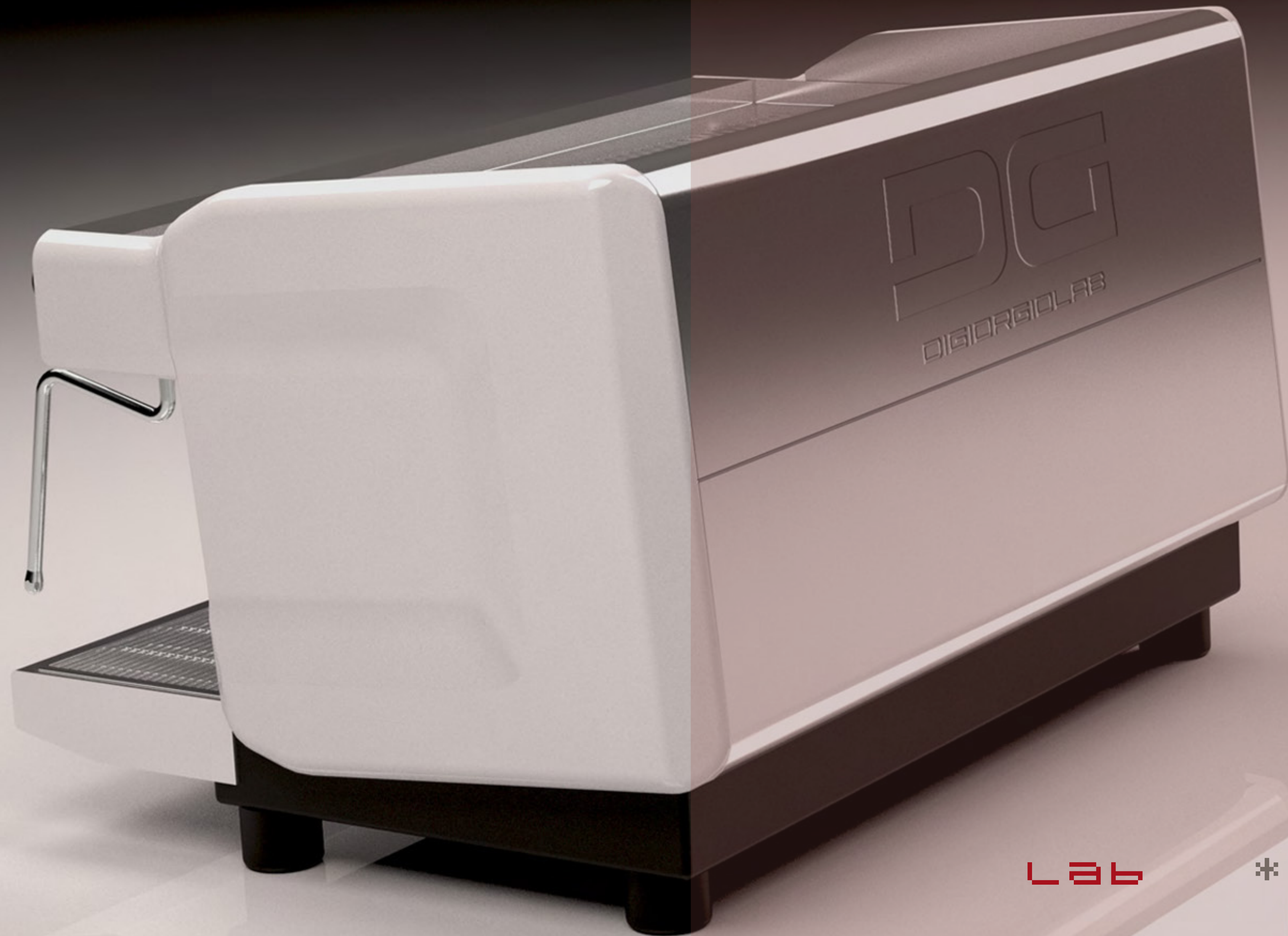
DIGIORGIOLAB

LAB100

DG
DIGIORGIOLAB



LAB100



Lab

* 100

MODEL	GROUPS	VERSION	GROUPS TYPE	W X D X H	BOILER	WEIGHT	VOLTAGE	POWER
LAB*100	1 gr	automatic	ring	14.2" x 21.3" x 21.3"	5 lt	99.2 lbs	110V-120V 220-240V	1700W 1800-2000W
	2 gr	automatic	ring	30" x 21.3" x 21.3"	11.5 lt	136.7 lbs	220-240V	5000W
	3 gr	automatic	ring	37.4" x 21.3" x 21.3"	18 lt	150 lbs	220-240V	5000-5400W

EQUIPMENT

Portafilter 1 way

Portafilter 2 way

OPTIONAL **

Italian version (Espresso cup) height 80 mm

American version (Takeway cups) height 110 mm

**No extra charge

ON DEMAND

Portafilter

Cup warmer 2g

FEATURES AND FUNCTIONALITY

- Programmable coffee and hot water dosing
- Stainless steel and painted steel body
- Stainless steel Steam/water wands
- Pre-infusion system
- Copper boiler (CU 99.5) with anti-oxidant treatment and internal heating exchanger
- Automatic wash cycle
- Backlit icons
- Adjustable drip tray for tall cups and traditional espresso cups
- Warranty - 1-year parts and labour

Matte Black

Matte White



1 gr



2 gr